


Microsoft Internet Explorer 9

Howard Verne
Revised 5/12/2011

5/12/2011 1



Internet Explorer Reference Guide

- Handy Reference Guides
 - <http://browsers.about.com/od/internetexplorertutorials/tp/IE9-tutorials.htm>
 - <http://msdn.microsoft.com/en-us/library/gg491737%28v=vs.85%29.aspx>
 - http://browsers.about.com/od/internetexplorertutorials/Internet_Explorer_Tutorials_For_Windows.htm

Internet Explorer 9

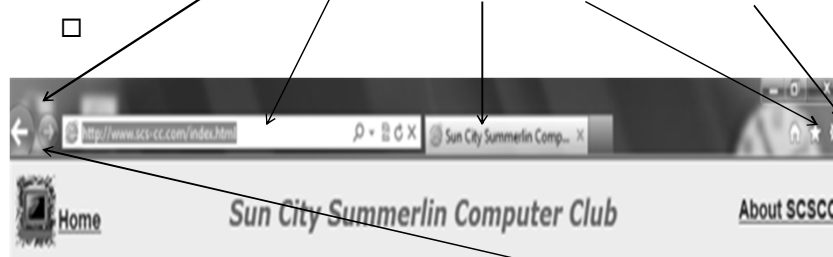
- Open Internet Explorer 9
- The design of IE9 starts of with a “clean” presentation
 - You can add additional Toolbars as desired
- This a *Tabbed* browser
 - This lets you easily view – and switch back and forth – several internet sites

5/12/2011

3

Clean IE 9 Screen

- Navigation Address Bar Tab Favorites/ Setup



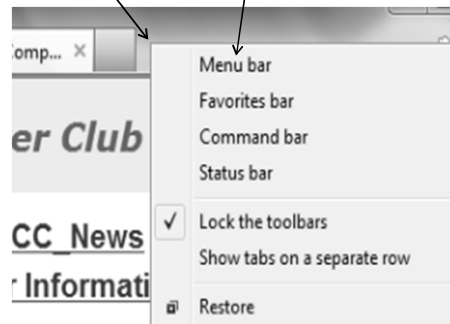
- Note: Hold Left Mouse button over Nav Arrows to see History

5/12/2011

4

Adding the Menu Bar

- Right Click, just to the right of the tab
 - Left click on *Menu bar*

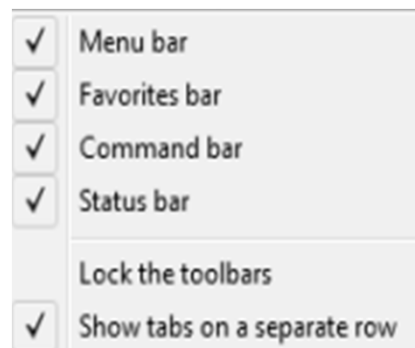


5/12/2011

5

Restoring other Tool Bars

- Check/Uncheck so your options match the example below.



5/12/2011

6

Using Tabs 1

- To open a new tab, press **Ctrl+T** or Click on the little tab at the right of the tab bars

- This will Open a new tab

- In the address bar type google.com, press *Enter*

- The Google web site should appear

- Repeat, typing wellsfargo.com



5/12/2011

9

Using Tabs 2

- You can switch back and forth between web Sites, by simply clicking on the tab
- To close a tab, click on the tab
 - Then click on the "X" in the right hand corner of the tab.



5/12/2011

10

Setting up Default Home Pages

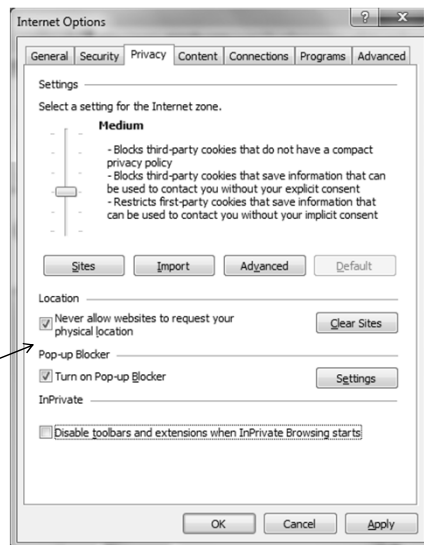
- In the menu bar, select *Tools/Internet Options*
 - In the General Tab, in the section labeled *Home Page*
 - Click *Use Current*
 - Click *OK*
 - Close IE9
- Re-open IE9
 - You should see your desired home page(s)

5/12/2011

11

Additional Setup

- In the menu bar, click on *Tools/Internet Options*
- Click the *Privacy* tab
 - Check as shown
 - New Privacy feature

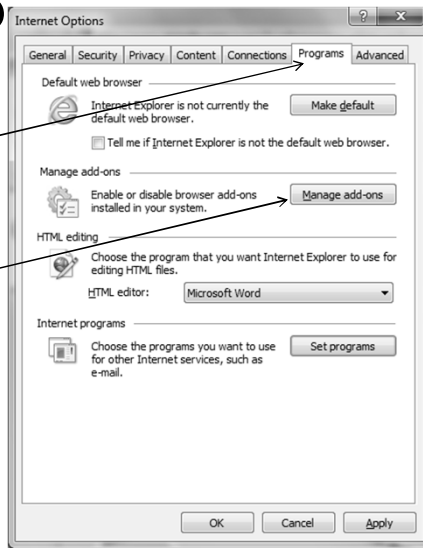


5/12/2011

12

Additional Setup

- Click on *Programs* tab
- Click on *Manage add-ons*

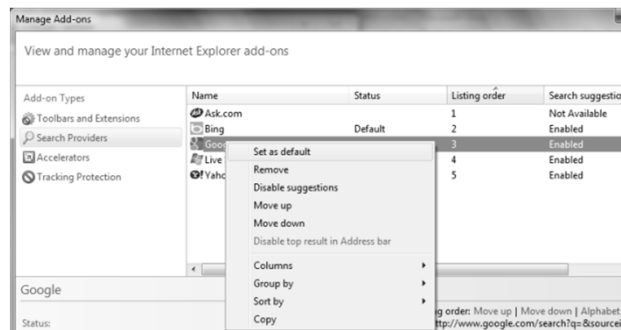


5/12/2011

13

Additional Setup

- Click on *Search Providers*
 - Right Click on *Google*
 - Left click on *Set Default*

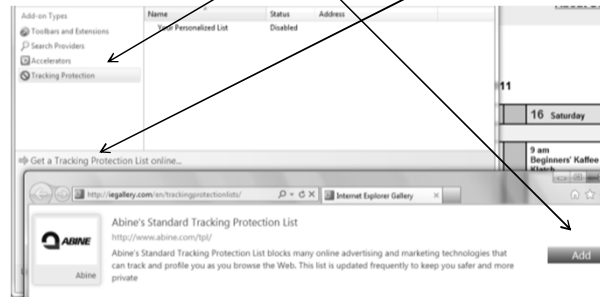


5/12/2011

14

Additional Setup

- Click on *Tracking Prevention*
 - Click on *Get a Tracking Protection List ...*
 - Add desired lists
 - New Privacy feature

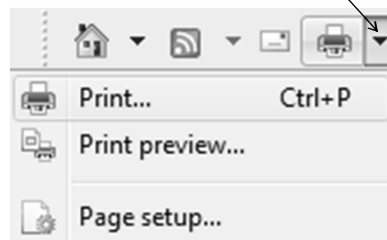


5/12/2011

15

New Print Icon

- Allows Print/Print Preview Page Setup
 - Click on Dropdown arrow

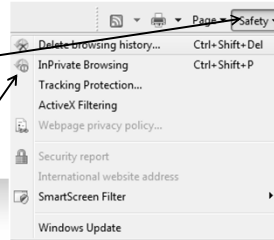


5/12/2011

16

In-Private Browsing

- Click on *Safety*
- Click on *InPrivate Browsing*



InPrivate is turned on

When InPrivate Browsing is turned on, you will see this indicator



InPrivate Browsing helps prevent Internet Explorer from storing data about your browsing session. This includes cookies, temporary Internet files, history, and other data. Toolbars and extensions are disabled by default. See Help for more information.

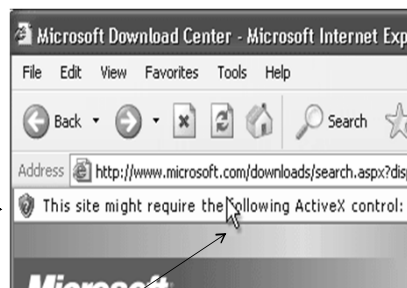
To turn off InPrivate Browsing, close this browser window.

5/12/2011

17

Downloading Files

- Sometimes, if the link you select is an executable, you will get a pop-up a yellow bar on the top of your screen
 - This to protect you from accidentally downloading files.
 - If you want to complete the download
 - Right Click on the yellow bar and select *Download File*

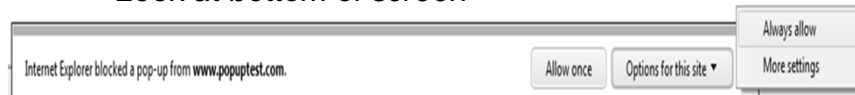


5/12/2011

18

Pop-Ups -1

- If a site you frequent has pop-ups, you can prevent the annoying message which requests permission to allow pop-ups. To see how this would work:
 - Go to the following site www.popupstest.com/
 - Click on *Multi Pop-up Test*
 - Look at bottom of screen

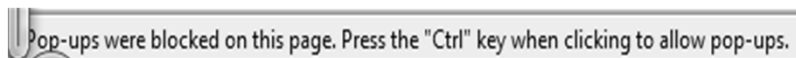


5/12/2011

19

Pop-Ups -2

- If you tell IE9 to always allow pop-ups from that site
 - You might still get, across the bottom of your browser, a bar that says: *Pop-ups ...*

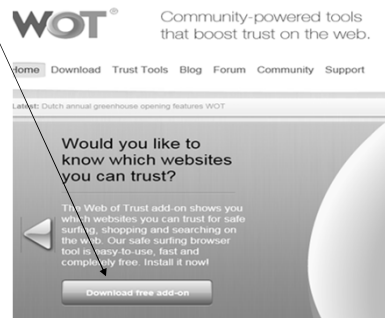


5/12/2011

20

Web of Trust 1

- I recommend you install the *Web of Trust Add-on*
 - Enter *mywot.com* in the address bar and tap *enter*
- Download the add-on

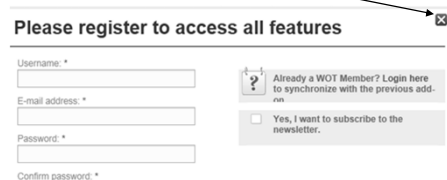


5/12/2011

21

Web of Trust 1

- After it is installed it will take you to its home site.
 - Select a protection scheme (Basic)
 - Click Next
 - Close Registration Window



5/12/2011

22

Web of Trust 2

- Close IE 9 and re-open it
- The next time you do a search you will see little circles
 - Green – OK
 - Red – Don't go There
 - Black - Unknown



5/12/2011

23